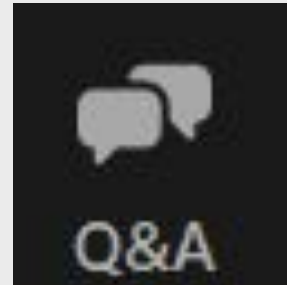


The background features abstract, overlapping geometric shapes in various shades of blue, ranging from light sky blue to deep navy blue. These shapes are primarily located on the left and right sides of the frame, creating a modern, dynamic feel. The central area is a clean white space where the text is placed.

Supporting Student Learners at Home

This meeting is a webinar. Once the host starts the meeting, video of the host will appear and you will hear them. Your audio will be turned off, so if you would like to ask the speaker a question click on the Q&A button at the bottom of your screen. Click on “Ask a Question” then type in your question. Questions will be read and answered at the end of the presentation.



UNIDOS US PARENT WEBINAR

AMBER CHARTER SCHOOL HAS PARTNERED WITH UNIDOS US FOR A SERIES OF WEBINARS TO GIVE PARENTS TOOLS TO BETTER SUPPORT THEIR CHILD DURING THE PANDEMIC.

THE SERIES WILL CONSIST OF 3 SESSIONS ON THE TOPICS BELOW:

- SESSION 1: USING SOCIAL EMOTIONAL STRATEGIES AT HOME
- SESSION 2: SUPPORTING STUDENT LEARNERS AT HOME
- SESSION 3: PARENTS AS DECISION MAKING PARTNERS

SESSIONS WILL TAKE PLACE ONCE A MONTH FROM JANUARY - MARCH IN **ENGLISH** AND FROM APRIL - JUNE IN **SPANISH**.



Homework Poll



Purpose

- Learn about the vital role that parents play both at home to ensure that their children succeed academically, by helping them create a personal learning space for their children, and learning how to foster open communication with their child's teacher.
- The purpose of this session is to assist in creating a meaningful collaboration between English language learners (ELL), the ELL Instructors, and the school community, to ensure that the families are receiving the support and resources that best support the children while learning remotely.

The Most Basic Yet Very Important Things Parents Can Do at Home for their Children



Study Time



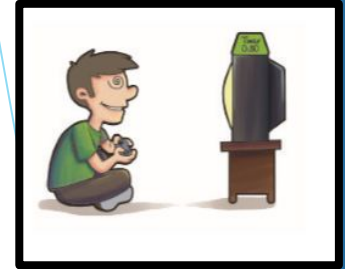
Proper Rest



Proper Diet &
Exercise



Listening to your
child



Television &
Internet



Play
Outside



Family/
Reading
Time



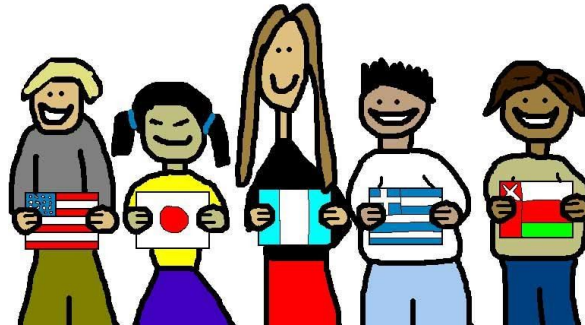
Social
Interaction

What is ENL?



ENL is...

English as a New Language is an instructional service provided to English Language Learners by teachers which supports the development of full social and academic proficiency in English.



Four Domains of Language

- Listening
- Speaking
- Reading
- Writing



Amber's ENL Curriculum



Our Freestanding English as a new language (ENL) programs provide instruction in English. Students in freestanding ENL programs can come from many different language backgrounds, and English may be the only common language among the students.

At Amber we implement the pull-out model: ELLs spend the majority of their day in all-English content instruction class. Then, we group students according to their levels of proficiency from various classes for English-acquisition-focused instruction.

Five Levels of Language Proficiency

- Level 1 - Entering
- Level 2 - Emerging
- Level 3 - Developing
- Level 4 - Expanding
- Level 5 - Commanding



School Supports



Ms. Gina
Principal - KB



Mr. Matt
Principal - EH



Ms. Francina
Assistant Principal - EH



Ms. Mia
Assistant Principal - KB



Ms. Sasha
Chief Academic Officer



Ms. Melissa
ELL Teacher - KB



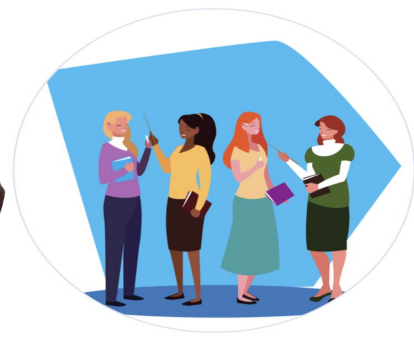
Ms. Nyissia
ELL Teacher - EH



Ms. Deanna
Staff Developer - KB



Ms. Kara
Staff Developer - EH



Teachers

Oral Acquisition Strategy: Total Physical Response



Oral Acquisition Strategy: Using descriptive and specific verbal language

- Pass me that.



Please hand me that black remote on the table next to the flower pot.

Which oral acquisition strategy
do you feel most prepared to
try with your child?



SAVE THE DATE! OUR NEXT SESSION WILL BE
TUESDAY, MARCH 16TH AT 5 PM!

By attending today, and filling out the pre-survey, you will automatically be entered in a raffle to win a **\$50 Grub Hub Gift Card!**

You must be present at the next session to claim the gift card if your name is chosen!

We hope to see you all in March!

Closing & Q & A

